

professional
COLOR **Matic**®
a brand of MOTIP DUPLI

Complete Car Refinishing

Putties



Lacquers



***Under Body
Coatings***



Technical Sprays



Degreasing and Cleaning

Silicone Remover.....	6
Plastic Cleaner antistatic	6
Spray Master	7

Putties

2K Universal Putty	8
2K Spray Putty	8
Putty dispenser unit	8
2K Fibre Putty	9
2K Soft Putty.....	9

Priming and Filling

Plastic Primer.....	10
1K Etch Primer.....	10
1K Wash Primer	11
1K Primer for ALU	11
1K Primer for ZINC	12
1K Epoxy Primer	12
1K Primer Filler	13
1K Spray Putty	14
1K High-Build Filler	14
1K Filler.....	15
2K Hi-Speed Primer Filler	15
2K Hi-Speed Epoxy Primer Filler	16
Guide Coat Black	16

Inox Spray

1K Inox Spray	17
---------------------	----

Painting of Plastics

Structure Spray	18
Plastic Spray	18

Wheel Spray

Wheel Painting	19
Wheel Spray Silver Chrome.....	19

Clear Coat

1K Clear Coat	20
2K Hi-Speed Clear Coat	21/22
2K Low-Speed Clear Coat	23

Finishing

Spot Blender.....	24
Finish Control Spray.....	24
Spray-gun Cleaner / Paint Remover	24

Colours

RAL Colour	25
1K Chassis Colour.....	26
1K Agricultural and Construction machinery spray	27
1K Engine Bay and Trunk Spray	28
1K Carpet Spray Paint	29

Under Body Coatings

Anti Gravel Spray Spray-gun	30
Anti Gravel Spray Spray	30
Anti Gravel Waterborne Spray-gun	31
Preservative and Anti Corrosion Spray-gun.....	32
Preservative and Anti Corrosion Spray	32
Bitumen Spray-gun	33
Bitumen Spray	33
Anti Corrosion Waxcoating Spray-gun	34
Anti Corrosion Waxcoating Spray	34

Technical Sprays

Brake Cleaner	35
Glass Cleaner.....	35
Citrus Cleaner	35
Stainless Steel Cleaner.....	36
Seal and Bond Remover	36
PTFE Grease.....	36
PTFE Dry	37
Penetrating Oil.....	37
Shock Oil.....	37
Multi Spray	38
Electro Protect.....	38
Welding Spray.....	38
Leak Detector	39
Cut and Drill Oil.....	39
Glue Spray	39
Tyre Black.....	40
Nozzles	41
Notes.....	42

Symbols

Symbols	35
---------------	----

ColorMatic products of highest quality

with product-specific spray head technology:

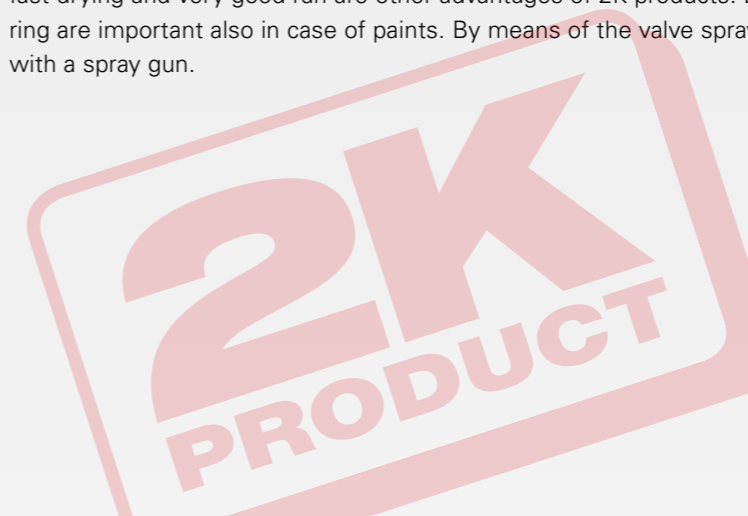


The advantages at a glance

- perfect atomisation for each application
- transparent cap for fast hue recognition
- hue ring indicates the hue of the contents
- application information directly on the label

Best paint results with innovative 2K technology

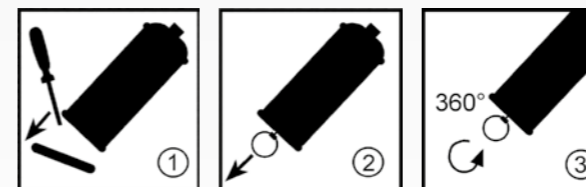
Easy handling and the best possible functional safety ensure the best results. ColorMatic 2K products stand out for their very good resistance to solvents and chemicals as well as for their high coating thicknesses and body at the same time. Extremely fast drying and very good run are other advantages of 2K products. Brilliant shine as well as resistance to UV rays and weathering are important also in case of paints. By means of the valve spray head systems used, spray results can be achieved like with a spray gun.



- Curing agents matched optimally to the product** – in separate aluminium cartridge.
- Easy handling** – prerequisite for topmost functional safety.
- Ideal for spot repair** – ensured by different package sizes: 200 ml to avoid residual amounts and 500 ml for larger surfaces.

Application:

1. Remove the protective cap at the bottom of the can with a suitable tool (e. g. screw driver). The protective cap holds a ring which one has to pull through the whole of the piston at the bottom of the can.
2. Pull the metal ring as far as it will go and...
3. ...followed by a complete 360° turn. Then shake the spraycan vigorously for approx. 3 min.. **Important for an optimum result !**



ColorMatic Professional Silicone Remover

- efficient removal of dirt, grease, oil, silicone, wax, tar, adhesive residues etc.
- increases the adhesion of following paint coats
- essential for a professional refinishing result
- easy and universally applicable
- substantial time-savings possible



5 sec.

1-2

Size	Description	Ord.No.	Colour	EAN-code
400 ml	Silicone Remover	174469	transparent	4048500174469

ColorMatic Professional Plastic Cleaner antistatic

- efficient and reliable cleaning of all interior and exterior plastic car-parts
- antistatic effect for less dust embeddings
- efficient removal of dirt, grease, oil, silicone, wax, tar, adhesive residues etc.



5 sec.

1-2

Size	Description	Ord.No.	Colour	EAN-code
400 ml	Plastic Cleaner Antistatic	190261	transparent	4048500190261



ColorMatic Professional Spray Master

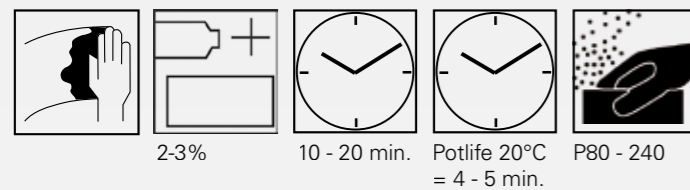
- perfect if there is a lot of painting work
- allows painting without fatigue
- provides controlled dosing without soiled fingers
- applicable for spraycans with and without colour indicating ring

Size	Description	Ord.No.	Colour	EAN-code
single	Spray Master	703072	black	4048500703072



ColorMatic Professional 2K Universal Putty

- universal polyester putty for the professional use; for filling and fine filling of holes and imperfections in one go
- excellent adhesion on bare metal, sheet steel, zinc, aluminium as well as plastics
- good hold, also on vertical surfaces
- compatible with all usual types of primers
- mix with 2-3% hardener
- resistant against solvents, propellants, acid, base, humidity and road salt
- easy application, results into surfaces free of pores
- density at 20°C: 1.8 kg/dm³



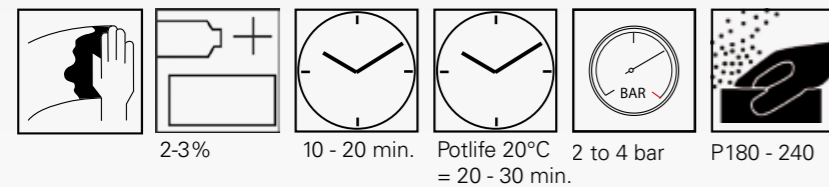
2-3% 10 - 20 min. Potlife 20°C = 4 - 5 min. P80 - 240

Size	Description	Ord.No.	Colour	EAN-code
1 kg	2K Universal Putty	702556	beige	4048500702556
2 kg	2K Universal Putty	702457	beige	4048500702457
3 kg	2K Universal Putty	702532	cartridge beige	4048500702532



ColorMatic Professional 2K Spray Putty

- 2-component spray putty based on polyester; for the filling of coarse sanding marks, pores or other coarse imperfections in one go
- can be used on bare steel, polyester putty, old paint coatings, glass-fibre reinforced plastics - product package includes hardener
- product package includes hardenstability.



2-3% 10 - 20 min. Potlife 20°C = 20 - 30 min. 2 to 4 bar P180 - 240

Size	Description	Ord.No.	Colour	EAN-code
1,5 kg	2K Spray Putty	702525	beige	4048500702525



Putty dispenser unit

The easy to wall mount putty dispenser unit is an ideal aid for the professional user. Especially designed for the 3kg cartridge of ColorMatic 2K Universal Putty, 702532. With this appliance the precise mixture of putty and hardener can be prepared at any time.

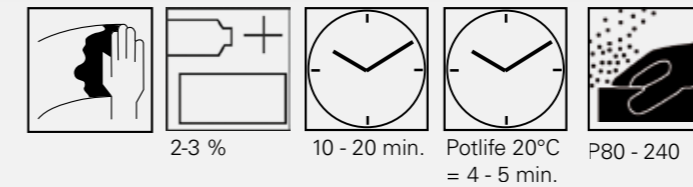
- universal use and material saving
- produces exact mixing-ratios

Size	Description	Ord.No.	Colour	EAN-code
single	Putty dispenser unit	610015	-	4048500610015



ColorMatic Professional 2K Glass Fibre Putty

- suitable for filling of larger damage areas, rust perforations with a diameter up to 12 mm
- good adhesion on metal surfaces – also on wood, plastics and concrete
- before application: if needed, sand surface down to bare metal and clean thoroughly afterwards
- mix with 2-3% hardener
- the special formulation of the polyester resins provides excellent adhesion also on surfaces which are affected by extension and strain
- density at 20°C: 1.6 kg/dm³
- resistant against solvents, acid, base, humidity and road salt



2-3% 10 - 20 min. Potlife 20°C = 4 - 5 min. P80 - 240

Size	Description	Ord.No.	Colour	EAN-code
1 kg	2K Fibre Putty	702563	grey-green	4048500702563
1,6 kg	2K Fibre Putty	702495	grey-green	4048500702495



ColorMatic Professional 2K Soft Putty

- especially formulated for the application on very plain surfaces good hold, also on vertical surfaces
- mix with 2-3% hardener
- excellent adhesion on bare metal surfaces – also on wood, plastics and concrete
- density at 20°C: 1.7 kg/dm³
- resistant against solvents, propellants, acid, base, humidity and road salt



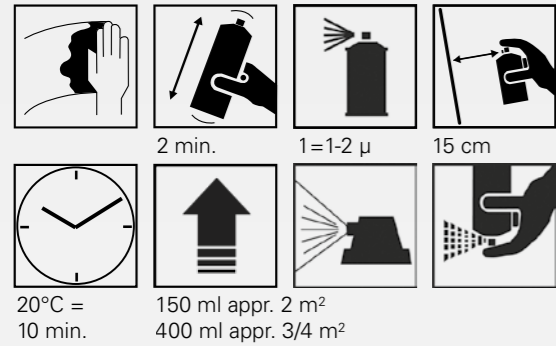
2-3% 10 - 20 min. Potlife 20°C = 4 - 5 min. P120 - 320

Size	Description	Ord.No.	Colour	EAN-code
1 kg	2K Soft Putty	702334	white	4048500702334
2 kg	2K Soft Putty	702518	white	4048500702518



ColorMatic Professional Plastic Primer

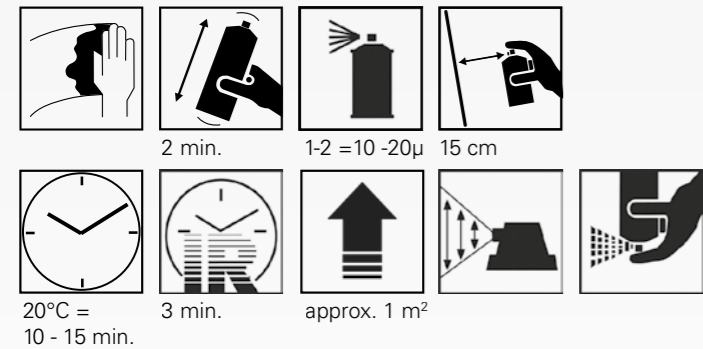
- excellent adhesion on all plastic car parts, both interior and exterior, e.g. bumper, tuning-parts, outside mirrors
- is applied as a primer directly on the plastic surface
- re-sprayable after 10 min. air-drying, e.g. with ColorMatic 1K Primer Filler, RAL-Acrylic spraypaint or pre-fill basecoat.



Size	Description	Ord.No.	Colour	EAN-code
150 ml	Plastic Primer	359347	transparent	4048500359347
400 ml	Plastic Primer	856563	transparent	4048500856563
400 ml	Plastic Primer	369032	silver transp.	4048500369032

ColorMatic Professional 1K Etch Primer

- excellent adhesion, especially on bare sanded metal
- active rust preventing pigments provide excellent corrosion prevention
- quick drying; also suitable as a welding primer

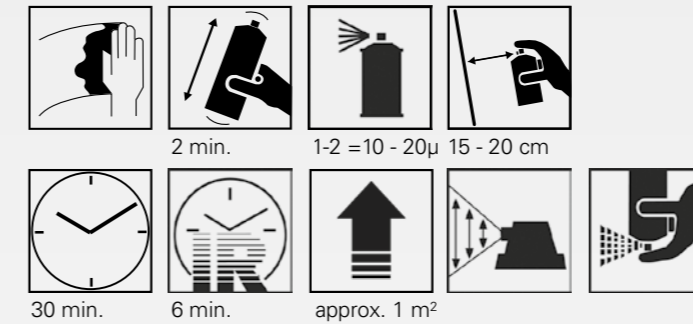


Size	Description	Ord.No.	Colour	EAN-code
400 ml	1K Etch Primer	756818	redbrown	4048500756818
400 ml	1K Etch Primer	386183	light grey	4048500386183



ColorMatic Professional 1K Wash Primer

- excellent adhesion, especially on bare sanded metal
- active rust preventing pigments provide excellent corrosion prevention
- quick air-drying
- also suitable as a welding primer

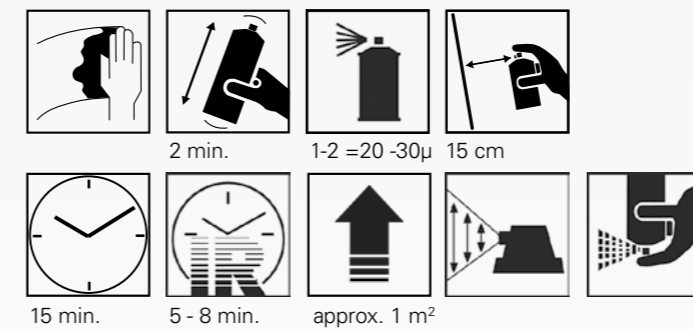


Size	Description	Ord.No.	Colour	EAN-code
400 ml	1K Wash Primer	391712	light grey	4048500391712
400 ml	1K Wash Primer	392566	red	4048500392566



ColorMatic Professional 1K Primer for Aluminium

- provides – because of specific additives – excellent adhesion and corrosion prevention especially on bare aluminium surfaces
- especially formulated for the refinishing of OEM plated aluminium car bodies
- re-sprayable with ColorMatic water- and solvent-based basecoats, 1K and 2K topcoats
- quick drying

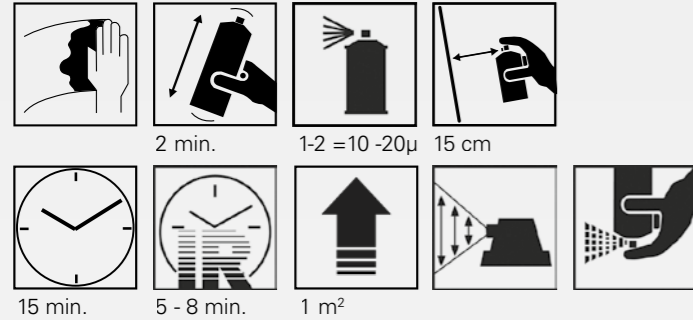


Size	Description	Ord.No.	Colour	EAN-code
400 ml	1K Primer for Aluminium	190278	light grey	4048500190278



ColorMatic Professional 1K Primer for Zinc

- provides – because of specific additives – excellent adhesion and corrosion prevention, especially on bare zinc-coated steel
- especially formulated for the refinishing of OEM plated zinc-coated car bodies
- re-sprayable with ColorMatic water- and solvent-based basecoats, 1K and 2K topcoats
- quick drying

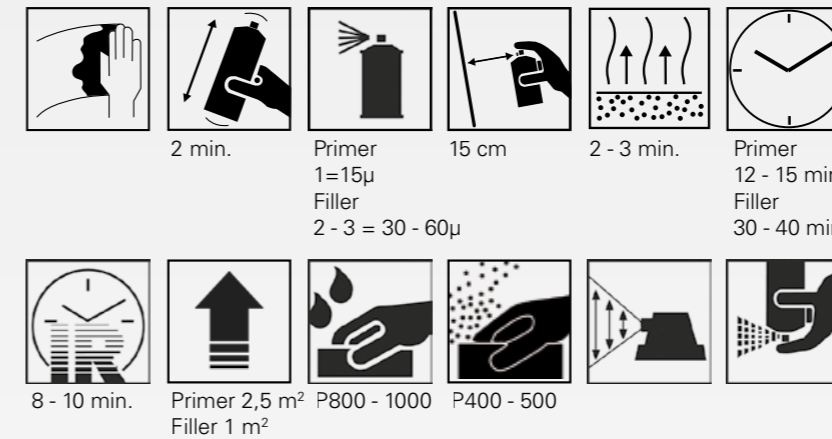


Size	Description	Ord.No.	Colour	EAN-code
400 ml	1K Primer for Zinc	190285	light grey	4048500190285



ColorMatic Professional 1K Primer Filler

- variably employable as primer or filler depending on layer thickness
- can be used on sheet steel, galvanised sheet steel and aluminium
- provides excellent adhesion, protection against corrosion and build
- can be overpainted with water and solvent based paint as well as 1K and 2K finishing paint*
- quick drying; weldable
- ideal for spot repair

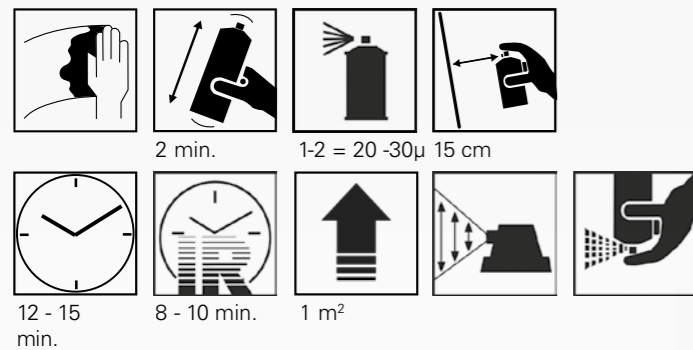


Size	Description	Ord.No.	Colour	EAN-code
400 ml	HG 1 1K Primer Filler	856532	white	4048500856532
400 ml	HG 2 1K Primer Filler	882425	light grey	4048500882425
400 ml	HG 3 1K Primer Filler	856525	grey	4048500856525
400 ml	HG 4 1K Primer Filler	644719	tele grey	4048500644719
400 ml	HG 5 1K Primer Filler	882432	basalt grey	4048500882432
400 ml	HG 6 1K Primer Filler	882449	graphite grey	4048500882449
400 ml	HG 7 1K Primer Filler	549663	black	4048500549663
400 ml	HG 8 1K Primer Filler	856549	red	4048500856549



ColorMatic Professional 1K Epoxy Primer

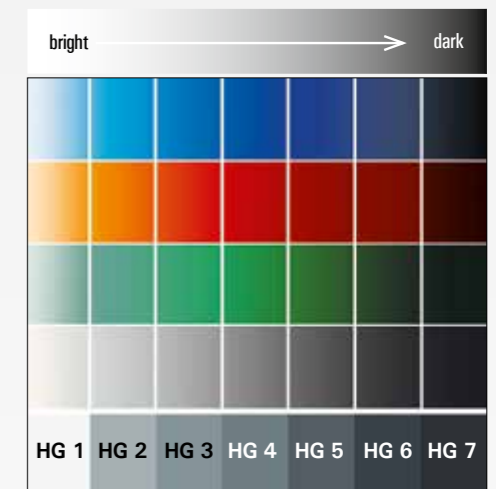
- universal usage
- provides excellent adhesion and corrosion prevention on sheet steel, zinc-coated steel, aluminium and anodised aluminium
- good flow, therefore wet-on-wet application possible
- quick drying
- re-sprayable with ColorMatic water- and solvent-based basecoats, 1K and 2K topcoats
- good insulation against humidity



Size	Description	Ord.No.	Colour	EAN-code
400 ml	1K Epoxy Primer	174414	grey	4048500174414



Colour examples:

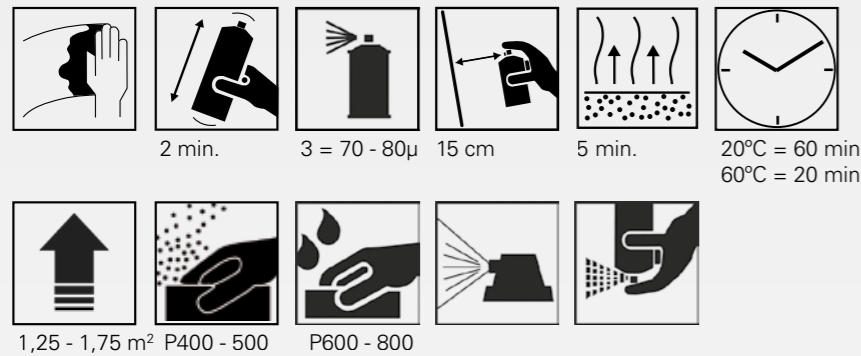


Advantages:

- up to 40 percent savings of paint
- up to 30 percent savings of time as fewer spray passes are required
- wet-in-wet processing is possible
- reduced grinding effort
- can be used as filler or primer

ColorMatic Professional 1K Spray Putty

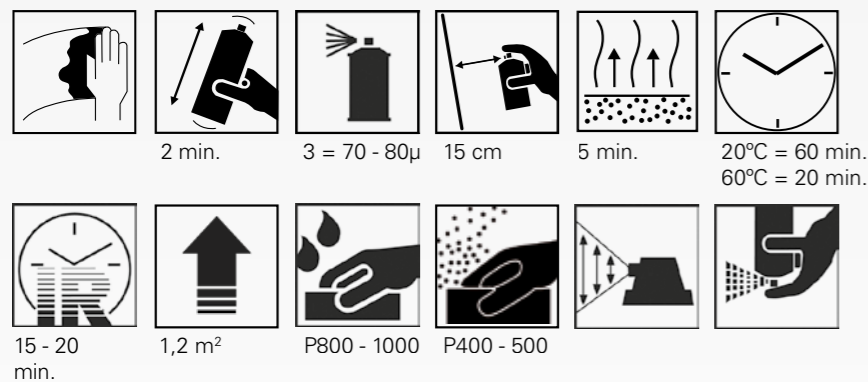
- excellent filling properties and good hold on vertical surfaces
- most suitable to level minor scratches and small irregularities in sanded surfaces
- excellent adhesion on polyester putty, plastics and all metal surfaces



Size	Description	Ord.No.	Colour	EAN-code
400 ml	1K Spray Putty	856570	beige	4048500856570

ColorMatic Professional 1K High Build Filler

- 1K acrylic filler with best possible filling and covering capacity
- high layer thickness in one pass already
- bonds very well to steel, galvanised steel, aluminium, polyester filler and on many plastics

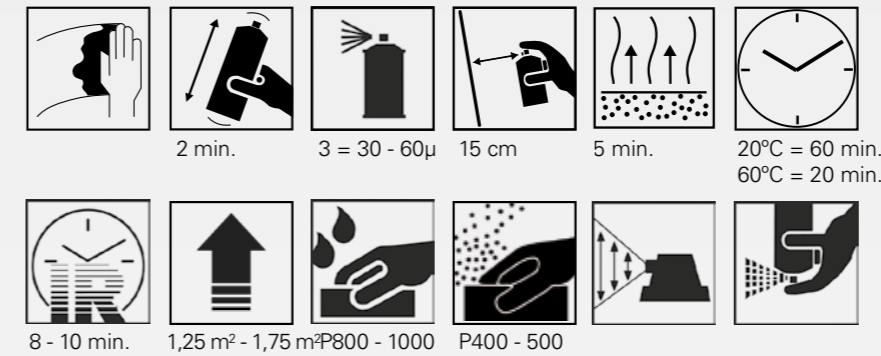


Size	Description	Ord.No.	Colour	EAN-code
400 ml	1K High Build Filler	385780	light grey	4048500385780
400 ml	1K High Build Filler	385773	tele grey	4048500385773
400 ml	1K High Build Filler	375361	graphite grey	4048500375361



ColorMatic Professional 1K Filler

- modern 1K acrylic filler with excellent filling properties and high coverage
- most suitable to level minor scratches and small irregularities in sanded surfaces
- very smooth flow and therefore wet-on-wet re-sprayable and easy to sand
- weldable

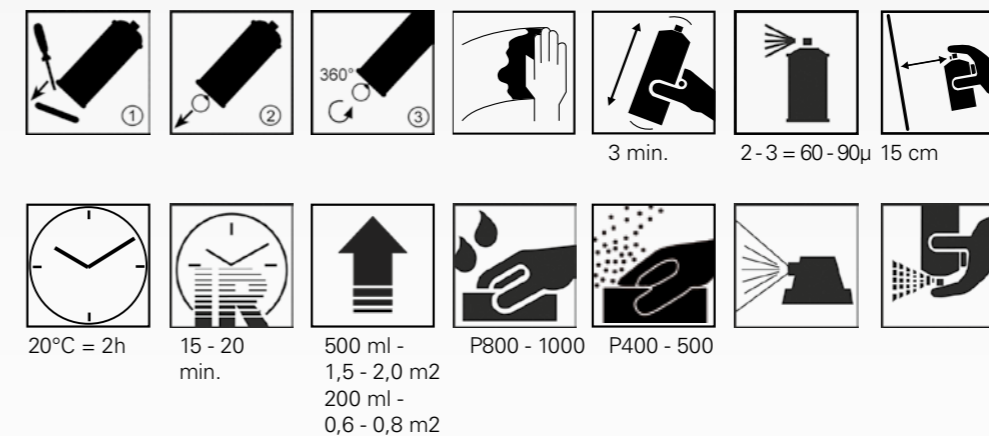


Size	Description	Ord.No.	Colour	EAN-code
400 ml	1K Filler	856556	beige	4048500856556
400 ml	1K Filler	874987	grey	4048500874987



ColorMatic Professional 2K High Speed Primer Filler

- can be universally applied on all metal surfaces like sheet steel, zinc-coated sheet steel and aluminium
- excellent adhesion and rust prevention
- very quick drying; easy to sand wet and dry
- resistant against chemicals and solvents; free of isocyanate
- can be recoated with ColorMatic basecoats waterbased and solventbased
- potlife 24h (20°C)

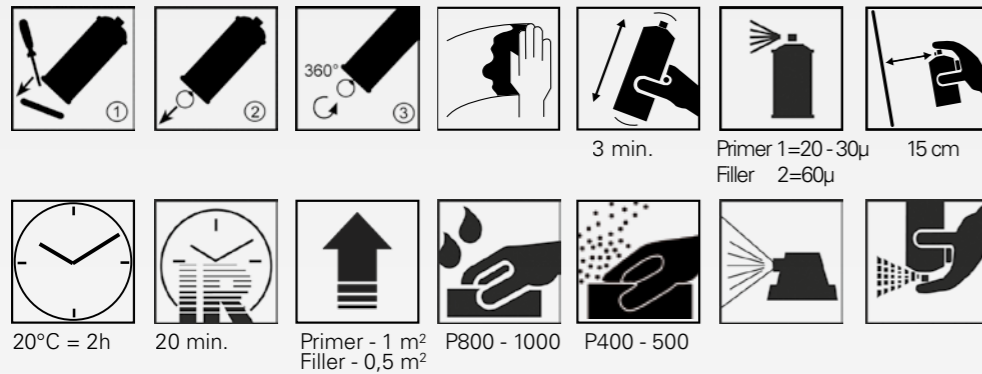


Size	Description	Ord.No.	Colour	EAN-code
200 ml	2K High Speed Primer Filler 195327		grey	4048500195327
500 ml	2K High Speed Primer Filler 195334		grey	4048500190315



ColorMatic Professional 2K Epoxy Primer Filler

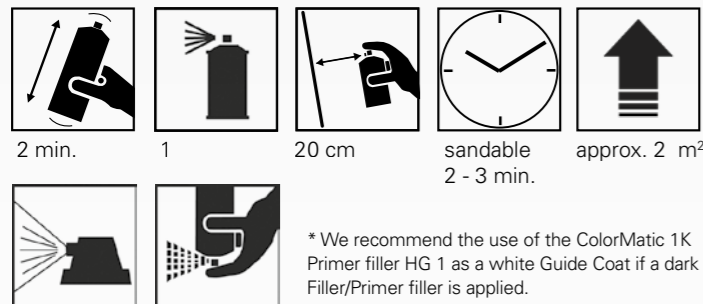
- universally applicable
- provides premium adhesion and corrosion protection properties
- for aluminium, sheet steel, zinc-coated sheet steel and GRP
- excellent flow, allows wet-on-wet application
- epoxy resin base
- potlife 24h (20°C)
- easy to sand, wet or dry
- can be recoated with polyester putty
- can be recoated with ColorMatic basecoats waterbased and solventbased as well as 1K and 2K topcoats
- Isocyanate-free



Size	Description	Ord.No.	Colour	EAN-code
200 ml	2K Epoxy Primer Filler	385544	light grey HG2	4048500385544
200 ml	2K Epoxy Primer Filler	382802	tele grey HG4	4048500382802
200 ml	2K Epoxy Primer Filler	383618	black HG7	4048500383618

ColorMatic Guide Coat Black

- fast drying premium acrylic paint
- serving to detect pores, sanding marks and imperfections after application of putty or filler
- the very fine atomisation provides the essential even coating and a secure result

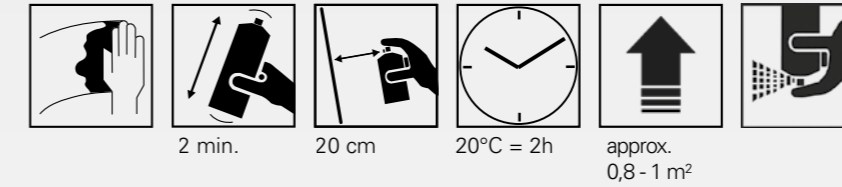


Size	Description	Ord.No.	Colour	EAN-code
400 ml	Guide Coat Black	756856	black	4048500756856



ColorMatic Professional Inox Spray

- Fast drying spray with good corrosion prevention to seal welding-seams
- Inox spray has good coverage and is resistant to petrol, chemicals and weather influences
- Inox spray has excellent adhesion and is re-sprayable with all paint systems



Size	Description	Ord.No.	Colour	EAN-code
400 ml	1K Inox Spray	375347	light grey	4048500375347



ColorMatic Professional Texture Spray

- provides the restoring of the structure of damaged plastics and plastic parts
- suitable for the refinish of plastic car parts exterior e.g.: outside mirrors, bumpers, door frames, tuning parts interior e.g.: dashboard, centre console, door linings, boot linings
- re-sprayable with ColorMatic water- and solvent-based basecoats, 1K and 2K topcoats



2 min. depending on 20 cm result desired 2 - 3 min.



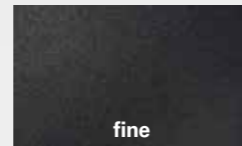
15 - 20 min. approx. 1,0 - 1,5 m²

Size	Description	Ord.No.	Colour	EAN-code
400 ml	Structure Spray	174452	transparent	4048500174452
400 ml	Structure Spray	190339	black	4048500190339

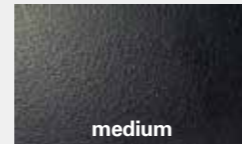
ColorMatic Professional Plastic Spray

- provides a quick and easy coating also of larger surfaces by the excellent flow, the professional broad-jet atomisation and the high productiveness
- the content of pigments has been especially formulated for the ease of blending and an excellent colour-match
- special additives provide a good adhesion directly on the plastic surface
- quick air-drying

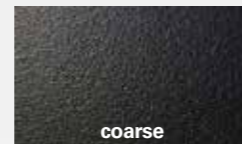
Size	Description	Ord.No.	Colour	EAN-code
400 ml	Plastic Spray PS 1	368950	anthracite metallic	4048500368950
400 ml	Plastic Spray PS 2	115073	medium grey	4048500115073
400 ml	Plastic Spray PS 3	856617	grey	4048500856617
400 ml	Plastic Spray PS 4	115080	dark grey	4048500115080
400 ml	Plastic Spray PS 5	882418	anthracite	4048500882418
400 ml	Plastic Spray PS 6	115097	dark anthracite	4048500115097
400 ml	Plastic Spray PS 7	368998	volcanic grey	4048500368998
400 ml	Plastic Spray PS 8	368943	deep grey	4048500368943
400 ml	Plastic Spray PS 9	368929	black grey	4048500368929
400 ml	Plastic Spray PS 10	368912	night black	4048500368912
400 ml	Plastic Spray PS 11	368981	tar black	4048500368981
400 ml	Plastic Spray PS 12	856600	black	4048500856600
400 ml	Plastic Spray PS 13	368967	deep black	4048500368967
400 ml	Plastic Spray PS 14	368936	satin black	4048500368936



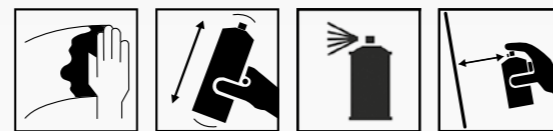
1 spraying pass



2 spraying pass



3 spraying pass



2 min. 3 to 4 20 cm



5 min. 20°C= 60 min. approx. 1 m²



ColorMatic Professional Wheel Spray

- premium acrylic paint with high hiding-power and a quick air-drying
- the professional broad-jet atomisation provides an excellent flow and secures a positive result



2 min. 2 to 3 15 cm 5 min.



20°C = 60 min. approx. 0,8 - 1 m²

Size	Description	Ord.No.	Colour	EAN-code
400 ml	Wheel Spray	190353	black, high gloss	4048500190353
400 ml	Wheel Spray	190377	silver, satin matt	4048500190377



ColorMatic Professional Wheel Spray Silver Chrome

- high-gloss effect spray, which leaves smooth surfaces look like chrome
- weather and abrasion resistant
- for an optimal result a very smooth, shiny black undercoat is required, e.g. Wheel Spray black glossy 190363
- premium acrylic paint with high hiding-power and a quick air-drying
- the professional broad-jet atomisation provides an excellent flow and secures a positive result



2 min. 3 to 4 15 cm 5 min.



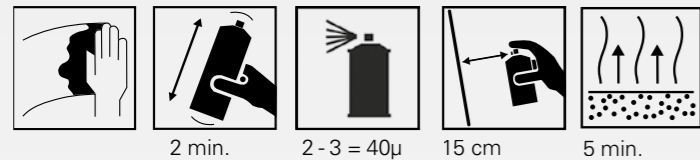
20°C = 60 min. approx. 1,5 m²

Size	Description	Ord.No.	Colour	EAN-code
400 ml	Wheel Spray	696879	silver chrome	4048500696879



ColorMatic Professional 1K Clear Coat

- quick drying, high-gloss, UV-resistant clear coat, universally applicable on all usual solvent-based basecoats
 - thanks to the excellent flow in combination with the ease of polishing this Clear coat is most suitable for Spot Repair
 - 1K clear matt paint is excellent suited for painting small parts in matt finish
- Don't paint over water-based paints**



2 min. 2-3 = 40µ 15 cm 5 min.



20°C 24 hours 15 - 20 min. approx. 1,5 - 2,0 m²
60°C 40 min.



20°C = 24 hours
60°C = 40 min.
IR = 15 to 20 min.

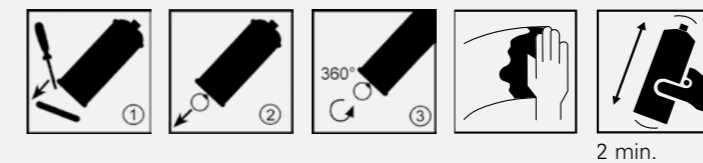
only 1K Clear Coat High Gloss

Size	Description	Ord.No.	Colour	EAN-code
400 ml	1K Clear Coat	756849	high gloss	4048500756849
400 ml	1K Clear Coat	369421	satin gloss	4048500369421
400 ml	1K Clear Coat	335600	matt	4048500335600

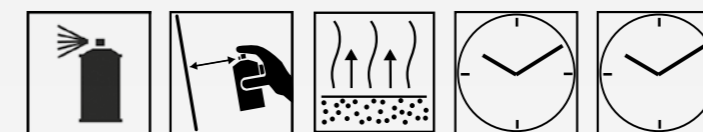


ColorMatic Professional 2K Hi-Speed Clear Coat High Gloss

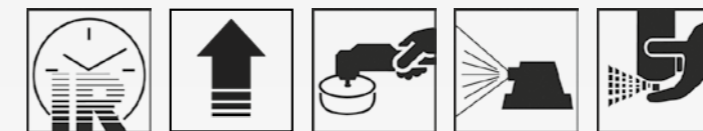
- this 2K Clear coat provides a high-gloss, is extremely scratch-resistant and provides highest resistance against fuel, UV-radiation and weather influences
- very quick drying
- very good flow
- easy polishability
- ideally suitable for spot repair
- favourable 200 ml spray can to avoid paint residues
- potlife: 24 h (20°C)
- suitable for painting over solvent and water based paints
- for small areas



2 min.



2-3 = 50µ 15 cm 2 min. 20°C: 7 hours Potlife 60°C: 45 min 24 hours



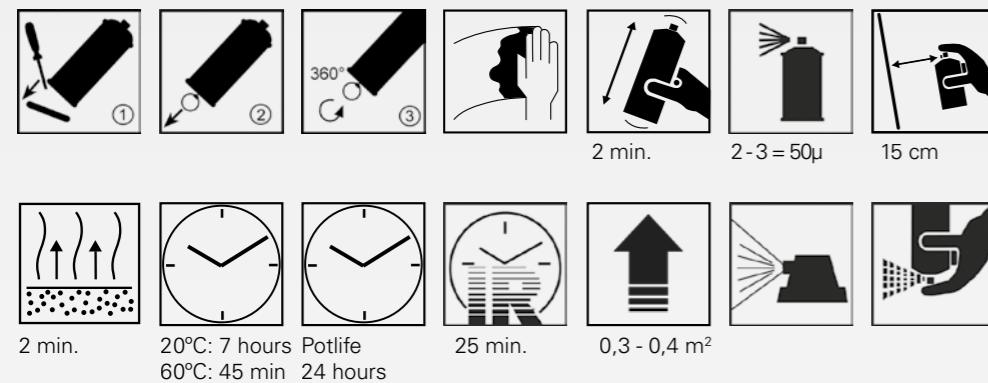
25 min. 500 ml 0,8 - 1 m² 20°C: 24 hrs 60°C: 45 min IR : 30 min
200 ml 0,3 - 0,4 m²

Size	Description	Ord.No.	Colour	EAN-code
200 ml	2K Hi-Speed Clear Coat	187216	high gloss	4048500187216
500 ml	2K Hi-Speed Clear Coat	190469	high gloss	4048500190469



ColorMatic Professional 2K **Hi-Speed** Clear Coat Satin Gloss

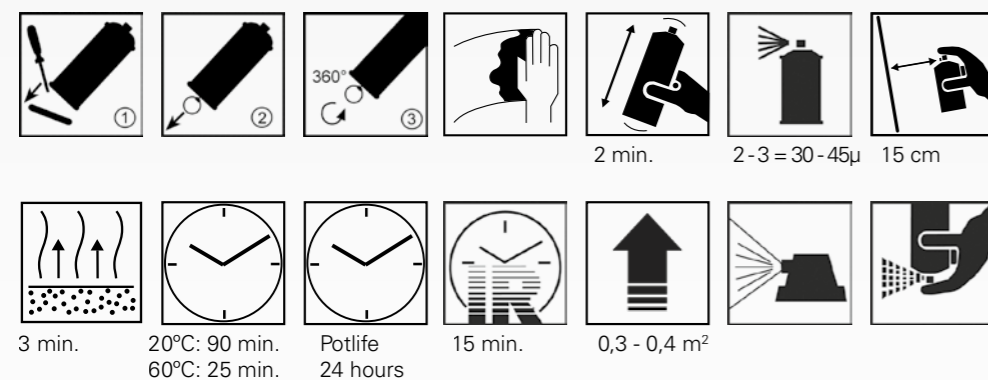
- this 2K clear coat is extremely scratch-resistant and provides highest resistance against fuel, UV-radiation and weather influences
- very quick drying
- very good flow
- favourable 200 ml spray can to avoid paint residues
- potlife: 24 h (20°C)
- suitable for painting over solvent and water based paints



Size	Description	Ord.No.	Colour	EAN-code
200 ml	2K High Speed Clear Coat	231650	satin gloss	4048500231650

ColorMatic Professional 2K **Hi-Speed** Clear Coat Matt

- this 2K clear coat is extremely scratch-resistant and provides highest resistance against fuel, UV-radiation and weather influences
- very quick drying
- very good flow
- favourable 200 ml spray can to avoid paint residues
- potlife: 24 h (20°C)
- suitable for painting over solvent and water based paints

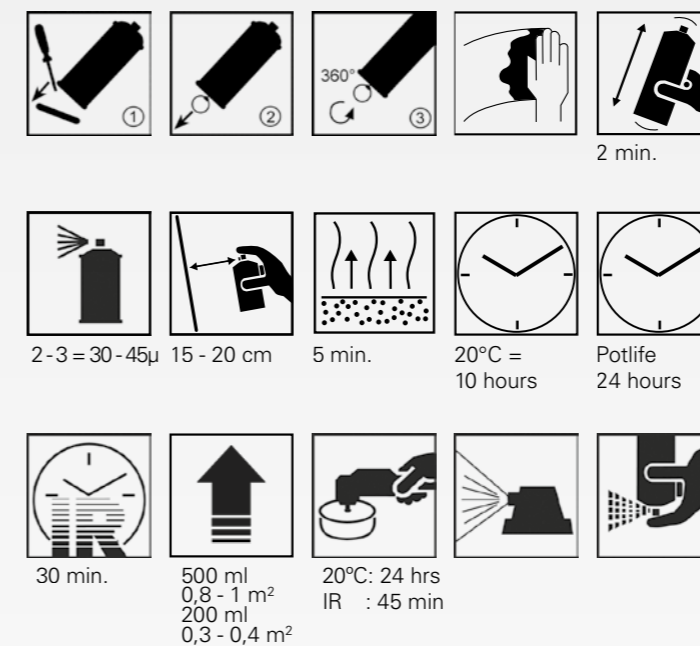


Size	Description	Ord.No.	Colour	EAN-code
200 ml	2K High Speed Clear Coat	375330	matt	4048500375330



ColorMatic Professional 2K **Low-Speed** Clear Coat High Gloss

- this 2K Clear coat provides a high-gloss, is extremely scratch-resistant and provides highest resistance against fuel, UV-radiation and weather influences
- useable **for larger areas**
- quick drying
- very good flow
- easy polishability
- ideally suitable for spot repair
- favourable 200 ml spray can to avoid paint residues
- potlife: 24 h (20°C)
- suitable for painting over solvent and water based paints

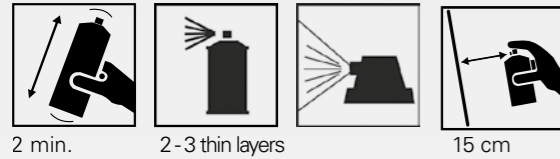


Size	Description	Ord.No.	Colour	EAN-code
200 ml	2K Low-Speed Clear Coat	375019	high gloss	4048500375019
500 ml	2K Low-Speed Clear Coat	374913	high gloss	4048500374913



ColorMatic Professional Spot Blender

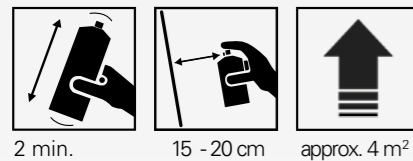
- universal applicable for spot blending of 1K and 2K Clear Coats as well as 1K and 2K topcoats
- thanks to the special formulation the overspray in the transition zone will be solved. This provides a very fine flow of the coating and reduces the polishing work
- essential for Spot Repair



Size	Description	Ord.No.	Colour	EAN-code
400 ml	Spot Blender	114229	transparent	4048500114229

ColorMatic Professional Finish Control Spray

- Cleansing foam as tool for polishing activities to remove polishing wax
- Finish Control Spray visualises possible polishing scratches



Size	Description	Ord.No.	Colour	EAN-code
400 ml	Finish Control Spray	230417	transparent	4048500230417

ColorMatic Professional Spray-gun Cleaner / Paint Remover

- provides an efficient, quick and gentle cleaning of the spraygun from all contaminations by solvent- and waterbased paints
- very time-saving and represents a mobile, cost-effective alternative of the spraygun cleaning-machine
- contains specific solvents, acetone and additives

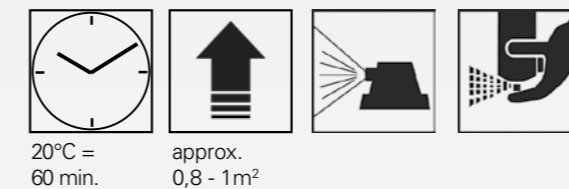


Size	Description	Ord.No.	Colour	EAN-code
400 ml	Spray-gun Cleaner	174353	transparent	4048500174353



ColorMatic Professional RAL Colour

- premium acrylic paint with satin-finish especially formulated for the quick coating of industrial surfaces
- thanks to the professional broad-jet atomisation it can also be used on larger surfaces
- an extremely high content of pigments and specific additives provide a very high hiding-power; high film-thickness possible, combined with a good hold
- good adhesion direct on metal

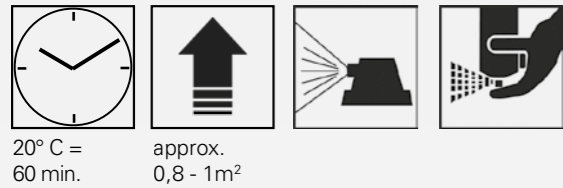


Size	Description	Ord.No.	Colour	EAN-code
400 ml	RAL 3000	856624	flame red high gloss	4048500856624
400 ml	RAL 9005	856631	deep black high gloss	4048500856631
400 ml	RAL 9005	856648	deep black satin matt	4048500856648
400 ml	RAL 9005	856655	deep black matt	4048500856655
400 ml	RAL 9006	856662	white aluminium satin matt	4048500856662
400 ml	RAL 9010	856679	bright white high gloss	4048500856679
400 ml	RAL 9010	190452	bright white satin matt	4048500190452
400 ml	RAL 9011	190384	graphite black satin matt	4048500190384



ColorMatic Professional 1K Chassis Colour

- premium acrylic paint for the quick coating of chassis of commercial vehicles
- thanks to the professional broad-jet atomisation it can also be used on larger surfaces
- an extremely high content of pigments and specific additives provide a very high hiding-power
- high film-thickness possible, combined with a good hold
- good adhesion direct on metal

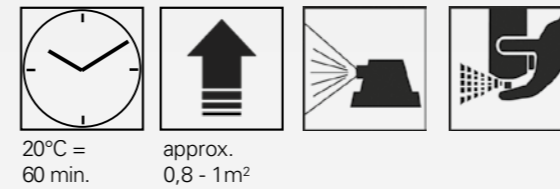


Size	Description	Ord.No.	Colour	EAN-code
400 ml	MAN RAL 3002	856730	carmine red satin matt	4048500856730
400 ml	MB 7350	856761	nova grey satin matt	4048500856761
400 ml	IV 105	892219	iveco red satin matt	4048500892219
400 ml	MB DB7354	357855	argentit grey	4048500357855

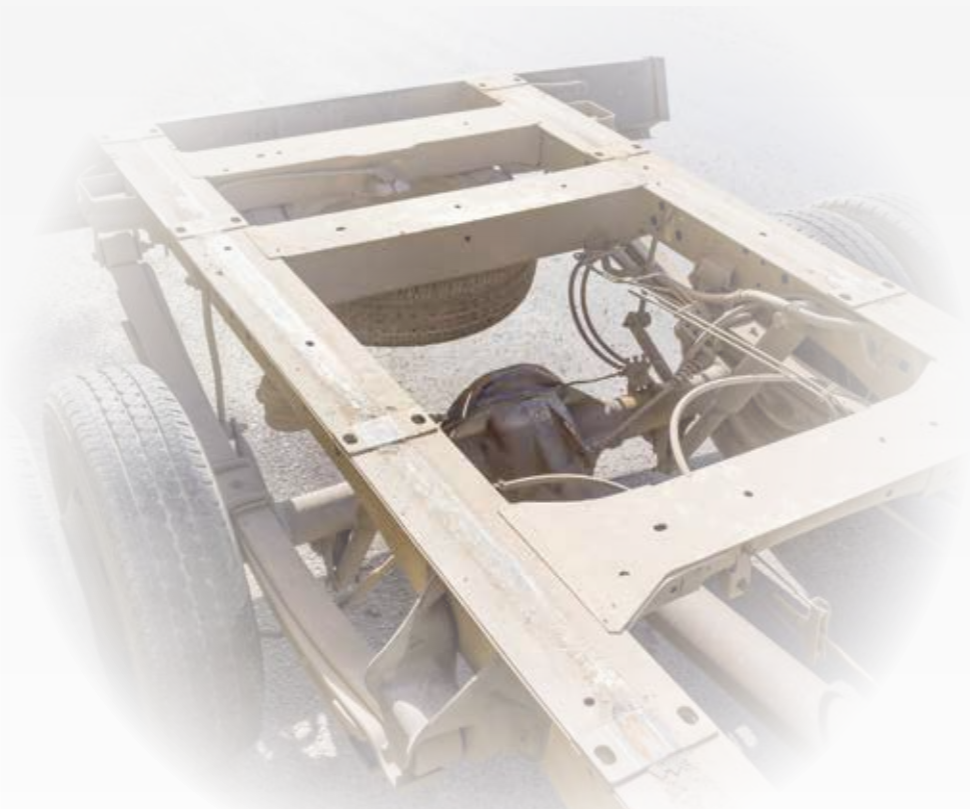


ColorMatic Professional 1K Agricultural and Construction machinery spray

- high-quality one component acrylic paint, suitable for fast painting of bodies of agricultural and building machinery
- can be used for larger surfaces as well due to professional fl at jet atomisation
- extremely high pigments and specific additives ensure high covering power
- high layer thickness at little sag
- good bonding directly on metal



Size	Description	Ord.No.	Colour	EAN-code
400 ml	Claas LM0205	320576	seed green	4048500320576
400 ml	Claas LM0243	320583	light grey	4048500320583
400 ml	Fendt LM0208	320590	green	4048500320590
400 ml	Ford LM0259	320606	blue	4048500320606
400 ml	John Deere LM0217	320613	yellow	4048500320613
400 ml	Krone LM0261	320620	green	4048500320620
400 ml	Krone LM1229	320637	crème	4048500320637
400 ml	MB Trac LM6841	320644	light green	4048500320644
400 ml	New Holland LM1622	320651	yellow	4048500320651
400 ml	Schlüter LM0277	320668	red	4048500320668

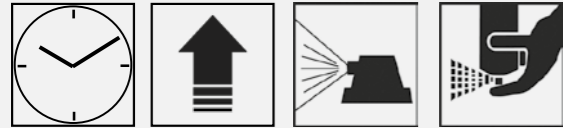


ColorMatic Professional 1K Engine bay and Trunk compartment Spray

- Lacquer to refinish the inside of the vehicle bodywork
- 1K Engine bay and Trunk compartment Spray has good coverage and surface hardness
- is resistant to petrol and chemicals
- 1K Engine bay and Trunk compartment Spray Lacquer has excellent adhesion direct on metal



2 min. 2 - 3 15 - 20 cm 5 min.



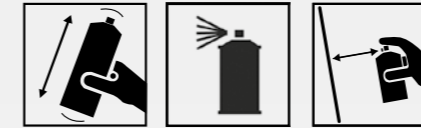
20°C = 60 min. approx. 1m²

Size	Description	Ord.No.	Colour	EAN-code
400 ml	1K Bodywork Lacquer	369001	green	4048500369001
400 ml	1K Bodywork Lacquer	369018	beige	4048500369018
400 ml	1K Bodywork Lacquer	369025	grey	4048500369025

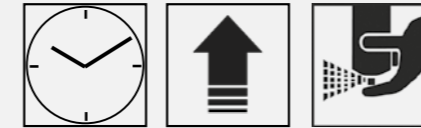


ColorMatic Professional 1K Carpet Spray Paint

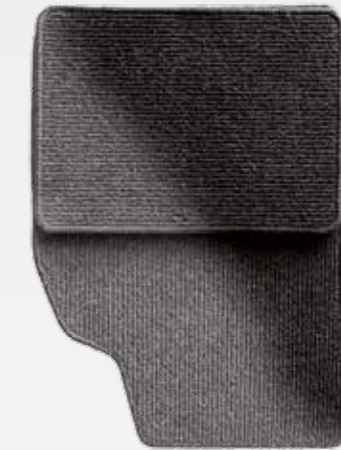
- User-friendly spray to mask wear in car mats
- 1K Carpet Spray Paint gives lasting colour and remains elastic
- ColorMatic Professional 1K Carpet Spray Paint has excellent adhesion
- applicable on textile and rubber car mats



2 min. depending on result desired 15 - 20 cm



20°C = 1h approx. 1,25 - 1,75 m²

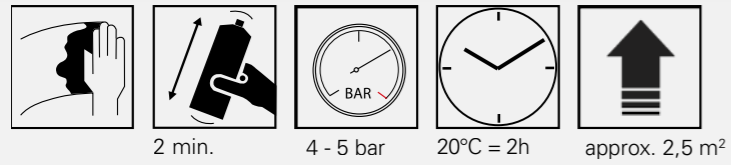


Size	Description	Ord.No.	Colour	EAN-code
400 ml	1K Carpet Spray Paint	369056	black	4048500369056
400 ml	1K Carpet Spray Paint	369063	anthracite	4048500369063



ColorMatic Professional Anti Gravel Spray-gun

- long-term protection against stone-chip, salt, chemicals, acids
- with very good adhesion
- excellent corrosion protection
- sound-absorbing
- recoatable – based on synthetic rubber
- heat-resistant up to 100°C max.
- to be applied with an UBC-Spray-Gun at 4 – 5 bar



Size	Description	Ord.No.	Colour	EAN-code
1.000 ml	Anti Gravel Spray-Gun	369070	white	4048500369070
1.000 ml	Anti Gravel Spray-Gun	369087	black	4048500369087
1.000 ml	Anti Gravel Spray-Gun	369094	grey	4048500369094

ColorMatic Professional Anti Gravel Spray

- long-term protection against stone-chip, salt, chemicals, acids
- with very good adhesion
- excellent corrosion protection
- sound-absorbing
- recoatable – based on synthetic rubber
- heat-resistant up to 100°C max.
- to be applied with an UBC-Spray-Gun at 4 – 5 bar



Size	Description	Ord.No.	Colour	EAN-code
500 ml	Anti Gravel Spray	380228	white	4048500380228
500 ml	Anti Gravel Spray	369131	black	4048500369131
500 ml	Anti Gravel Spray	380235	grey	4048500380235



ColorMatic Professional Anti Gravel Waterborne Spray-gun

- long-term protection against stone-chip, salt, chemicals, acids
- eco-friendly, thus waterbased
- ease-of-application – tools can be cleaned with warm water
- excellent corrosion protection
- sound-absorbing, recoatable
- based on synthetic rubber
- heat-resistant up to 100°C max.
- to be applied with an UBC-Spray-Gun at 4 – 5 bar

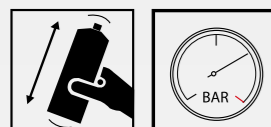


Size	Description	Ord.No.	Colour	EAN-code
1.000 ml	Anti Gravel Spray-gun	369155	black waterborne	4048500369155



ColorMatic Professional Preservative and Anti-Corrosion Spray-gun

- Preservative with excellent adhesion
- to treat the hollow spaces in vehicle bodywork
- resistant to weather influences, weak acids and bases
- good penetrating properties
- excellent corrosion protection



2 min. 2,5 - 4 bar

Size	Description	Ord.No.	Colour	EAN-code
1.000 ml	Preservative and Anti Corrosion Spray-Gun	369179	transparent	4048500369179



ColorMatic Professional Bitumen Spray-gun

- excellent adhesion on metal surfaces
- long-term protection against acid and salt
- protects against heat and frost
- excellent corrosion protection
- long-lasting high elasticity
- sound absorbing
- not re-coatable
- to be applied with an UBC-Spray-Gun at 4 – 5 bar



2 min. 4 - 5 bar 2 - 3 m²

Size	Description	Ord.No.	Colour	EAN-code
1.000 ml	Bitumen Spray-Gun	369193	black	4048500369193



ColorMatic Professional Preservative and Anti-Corrosion Spray

- Preservative with excellent adhesion
- to treat the hollow spaces in vehicle bodywork
- resistant to weather influences, weak acids and bases
- good penetrating properties
- excellent corrosion protection



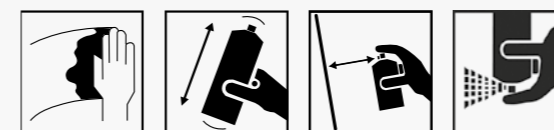
2 min.

Size	Description	Ord.No.	Colour	EAN-code
500 ml	Preservative and Anti Corrosion Spray	369162	transparent	4048500369162



ColorMatic Professional Bitumen Spray

- excellent adhesion on metal surfaces
- long-term protection against acid and salt
- protects against heat and frost
- excellent corrosion protection
- long-lasting high elasticity
- sound absorbing
- not re-coatable



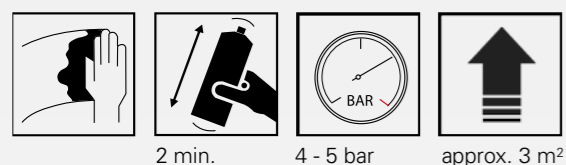
2 min. 20 cm

Size	Description	Ord.No.	Colour	EAN-code
500 ml	Bitumen Spray	369186	black	4048500369186



ColorMatic Professional Anti Corrosion Waxcoating Spray-gun

- long-term protection of cavities in car bodies
- excellent adhesion and corrosion protection
- weather resistant, resistant against most acids and chemical agents
- self-healing effect
- wax-based coating
- heat-resistant up to 150°C max.
- to be applied with an UBC-Spray-Gun at 4 – 5 bar

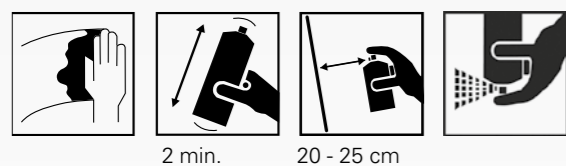


2 min. 4 - 5 bar approx. 3 m²

Size	Description	Ord.No.	Colour	EAN-code
1.000 ml	Anti Corrosion Waxcoating Spray-gun	369216	transparent	4048500369216
1.000 ml	Anti Corrosion Waxcoating Spray-gun	387999	black	4048500387999

ColorMatic Professional Anti Corrosion Waxcoating Spray

- long-term protection of cavities in car bodies
- excellent adhesion and corrosion protection
- weather resistant, resistant against most acids and chemical agents
- self-healing effect
- wax-based coating
- heat-resistant up to 150°C max.



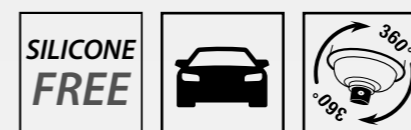
2 min. 20 - 25 cm

Size	Description	Ord.No.	Colour	EAN-code
500 ml	Anti Corrosion Waxcoating Spray	369209	transparent	4048500369209
500 ml	Anti Corrosion Waxcoating Spray	388002	black	4048500388002



ColorMatic Professional Brake Cleaner

- Brake cleaner with high dissolving properties
- leaves no residue
- has a professional, strong direct spray pattern
- CO² filling
- is non-conductive
- is non-corrosive



Size	Description	Ord.No.	Colour	EAN-code
500 ml	Brake Cleaner	369285	-	4048500369285

ColorMatic Professional Glass Cleaner

- is a slightly basic spray to clean windscreens and mirrors
- is user-friendly and has high dissolving properties
- is a cleansing and de-greasing foam



Size	Description	Ord.No.	Colour	EAN-code
500 ml	Glass Cleaner	369278	-	4048500369278

ColorMatic Profession Citrus Cleaner

- removes grease, tar, oil, wax, ink, resin stickers,
- residues of glue from parts of treated and untreated metal and various types of plastic
- leaves no residue
- ColorMatic Professional Citrus Cleaner has in view of its slow evaporation, lasting dissolving properties and is non-corrosive
- will also remove adhesive stickers



Size	Description	Ord.No.	Colour	EAN-code
500 ml	Citrus Cleaner	369292	-	4048500369292



ColorMatic Professional Stainless Steel Cleaner

- is a user-friendly spray to clean and protect stainless steel parts
- has excellent cleansing properties
- has good corrosion prevention and is non polishing
- restores and intensifies the gloss and gives lasting protection

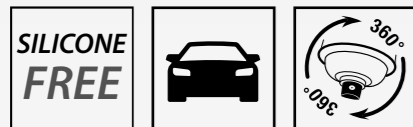


Size	Description	Ord.No.	Colour	EAN-code
500 ml	Stainless Steel Cleaner	369377	-	4048500369377



ColorMatic Professional Seal and Bond Remover

- is a user-friendly spray to fast and easily remove dried adhesives and seals as well as hardened sealing material from car and machine parts
- has dissolving properties and is non-conductive and non-corrosive
- has in view of its high viscosity and its slight gel structure an optimum effect



Size	Description	Ord.No.	Colour	EAN-code
500 ml	Seal and Bond Remover	369391	-	4048500369391



ColorMatic Professional PTFE Grease

- is a Silicone-free spray grease to lubricate mechanical parts of metal or plastic
- PTFE grease has outstanding mechanical and thermal stability and excellent adhesion properties
- high-viscosity and good hold
- prevents wear and sticking and is resistant to weather influences and weak acids and bases
- has excellent corrosion prevention
- is water-repellent. Contains Polytetrafluorethen



Size	Description	Ord.No.	Colour	EAN-code
500 ml	PTFE Grease	369261	-	4048500369261



ColorMatic Professional PTFE Dry

- is a Silicone-free, dry surface lubricant to treat mechanical parts of metal or plastic
- lubricates without leaving sticky residues of oil or grease
- prevents wear and sticking and is suitable for parts which are liable to light load and low speed
- is resistant to weather influences and is suitable as release agent for moulds. Contains polytetrafluorethen

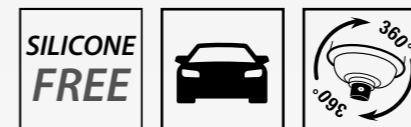


Size	Description	Ord.No.	Colour	EAN-code
500 ml	PTFE Dry	369247	-	4048500369247



ColorMatic Professional Penetrating Oil

- is an effective tool to loosen rusted parts
- is silicone-free and has good penetrating properties
- contains graphite and MoS2 and is moisture repellent and corrosion preventive.
- MoS2 = enhancing the slippage



Size	Description	Ord.No.	Colour	EAN-code
500 ml	Penetrating Oil	369315	-	4048500369315



ColorMatic Professional Shock Oil

- is an effective tool to loosen rusted parts
- has excellent lubricating properties
- is silicone-free and briefly decreases the temperature of the object to -30°C
- the quick-freeze shrinks the metal helping the oil to penetrate and loosens the parts at the same time

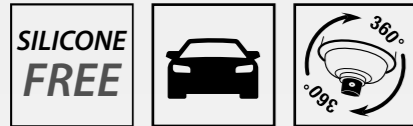


Size	Description	Ord.No.	Colour	EAN-code
500 ml	Shock Oil	369322	-	4048500369322



ColorMatic Professional Multi Spray

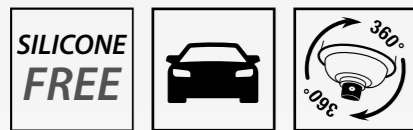
- is an universal oil to clean and lubricate parts of metal and plastic
- after cleaning a protective film remains
- has excellent lubricating properties and is suitable to remove: oil, grease, wax, underbody coating and tar
- is silicone-free, moisture repellent and corrosion preventive



Size	Description	Ord.No.	Colour	EAN-code
500 ml	Multi Spray	369384	-	4048500369384

ColorMatic Professional Electro Protect

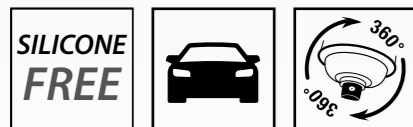
- is a preservative to prevent starting problems caused by moisture
- has good penetrating properties and excellent adhesion and corrosion prevention is resistant to water, salt and weak acids and bases



Size	Description	Ord.No.	Colour	EAN-code
500 ml	Electro Protect	369230	-	4048500369230

ColorMatic Professional Welding Spray

- prevents the adhesion of welding spatter on the welding mouth and the surroundings of the welding zone
- is non-flammable, silicone-free and can be removed with water
- is non-corrosive and slightly basic



Size	Description	Ord.No.	Colour	EAN-code
500 ml	Welding Spray	369308	-	4048500369308



ColorMatic Professional Leak Detector

- is a non-flammable spray to trace leakages in gas pipes.
- is DVGW certified, number NG/5170BR0105
- can be removed with water, is silicone-free, non-corrosive and slightly foaming indicating the leak
- is environment-friendly and slightly basic



Size	Description	Ord.No.	Colour	EAN-code
500 ml	Leak Detector	369414	-	4048500369414

ColorMatic Professional Cut and Drill Oil

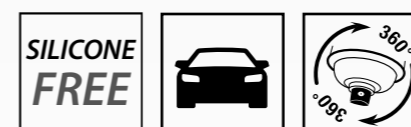
- is an oil to prevent over-heating of metals in cutting and drilling activities
- protects and lubricates the tools and reduces wear of the tool
- is silicone-free and non-corrosive



Size	Description	Ord.No.	Colour	EAN-code
500 ml	Cut and Drill Oil	369346	-	4048500369346

ColorMatic Professional Glue Spray

- suitable for both applications - permanent and temporary adhesion
- is suitable to glue paper, cardboard, wood, textile and various types of plastic - is suitable to glue larger surfaces as the spray-pattern is approx. 10cm wide
- is user-friendly and fast drying

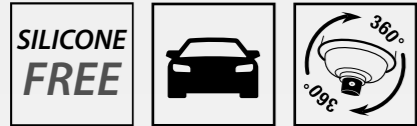


Size	Description	Ord.No.	Colour	EAN-code
500 ml	Glue Spray	369339	-	4048500369339



ColorMatic Professional Tyre Black

- is a user-friendly spray to intensify the colour of car tyres
- protects against weather influences
- is silicone-free and ph-neutral.
- can be used for the fitting of tyres as well



Size	Description	Ord.No.	Colour	EAN-code
500 ml	Tyre Black	369353	-	4048500369353



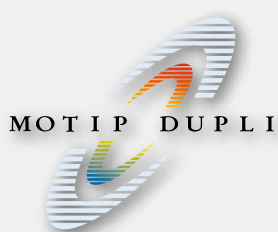
Nozzles

Description	Contents	Ord.No.	Colour	EAN-code
① variable fan nozzle	10	379314	black red	4048500379314
② Fan-nozzle wide	10	379321	red-black	4048500379321
③ Fan-nozzle medium	10	379444	white-black	4048500379444
④ Fan-nozzle small	10	379406	black-yellow	4048500379406
⑤ Standard nozzle wide	10	379420	black-white	4048500379420
⑥ UBC-nozzle	10	379413	white	4048500379413





professional
COLOR *Matic*®



MOTIP DUPLI B.V.
8470 AE Wolvega
Tel. +31 (0) 561 - 694400
info@nl.motipdupli.com
www.motip.com